

Performance/Costume Fees

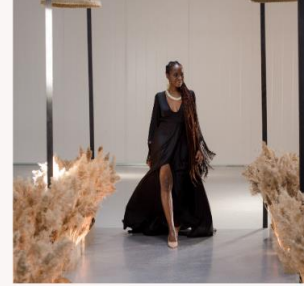
If your child is enrolled in the classes below your total perf. fee is listed with breakdown	Total Fee breakdown includes →	Onlocation per family fee	Dance Costume	Model Make-over	Actor Scripts	Video Link Photo Shoot
Sat. Modeling Etiquette	\$65	\$25		\$25		\$15
Sat. Dance & Majorette	\$119	\$25	\$79			\$15
Sat. Ballet/Tap	\$119	\$25	\$79			\$15
Sat. Ballet Modeling	\$134	\$25	\$79	\$15		\$15
Sat. Mon. Tues. Acting Dance Modeling	\$144	\$25	\$79	\$15	\$10	\$15
Wed. Ballet Tap Modeling	\$134	\$25	\$79	\$15		\$15
Thur. Acting	\$50	\$25			\$10	\$15



Performance Fees Due March 30th



PERFORMANCE FEES
FOR
FASHION SHOW AND LION KING



DUE MARCH 30TH

THIS IS A ONETIME ONLY PERFORMANCE FEE

WILL AFFECT MARCH AUTO-PAYMENTS UNLESS OTHERWISE SPECIFIED. YOU MAY DIVIDE PAYMENTS EMAIL OR CALL THE SCHOOL AND SAY "DIVIDE MY PAYMENTS PLEASE"

WE ARE PREPARING FOR OUR 2024 STAGE PLAY/RECITAL

WHO WILL PERFORM? ALL STUDENTS 3 TO 18 YEARS

WHAT WILL THE DANCERS WEAR? COSTUMES PURCHASED BY THE PARENTS

WHAT WILL THE THURSDAY ACTORS WEAR? SEE INSTRUCTOR

WHEN DO PARENTS PURCHASE DANCE COSTUMES? MARCH 30TH

THIS FEE IS INCLUDED IN PERFORMANCE FEES

WHY PURCHASE SO EARLY? FIELDCREST ORDERS COSTUMES FROM 6 MAJOR COSTUME

HOUSES IN THE UNITED STATES.

IT TAKES APPROXIMATELY 4 MONTHS FOR COMPANIES TO MAKE EACH

COSTUME AND SHIP THEM.

SO, REMEMBER...

MARCH 30TH IS THE
LAST DAY WE CAN ACCEPT YOUR COSTUME PAYMENT OF
\$79.00

DISCLOSURE: WEDNESDAY CLASSES PERFORM 2 DANCES. SECOND COSTUME COST TO BE DETERMINED
ACTING STUDENT'S CHARACTER COSTUME ARE DETERMINED BY THE TEACHER AND PURCHASED BY THE
PARENTS.

AT TIME OF PAYMENT PLEASE DESIGNATE WHICH CLASS/COSTUME YOU ARE PURCHASING
AND THE SIZE OF THE COSTUME

SIZE CHART: CHILD SIZES: 4/6 SMALL 8/10 MEDIUM 12/14 LARGE

ADULT SIZES: SMALL, MED, LARGE, X-LARGE, XX-LARGE

NOTE:

1. SOME COSTUMES RUN SMALL. WHEN IN DOUBT ORDER THE LARGER SIZE.
2. EACH COSTUME COST \$79.00 COMPLETE WITH TIGHTS (SHOES NOT INCLUDED)
3. POLICY OF ALL COSTUME MANUFACTURES...
ONCE COSTUMES ARE ORDERED PAYMENTS ARE NON-REFUNDABLE

SEE PERFORMANCE FEES BELOW